

Cannabinoid Analysis Report



BRITISHCANNABIS

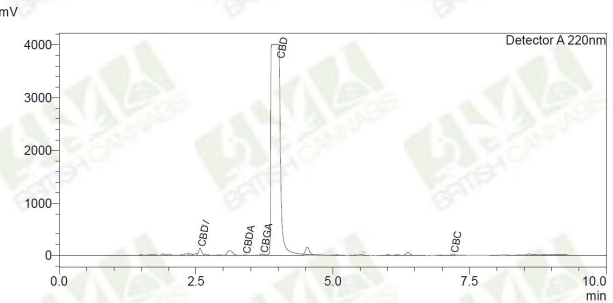
Analytical Test Parameters

Sample Name	10% Water Soluble	Method	HPLC
Date-Time	25-Nov-2019 12:22:11	Test Type	Cannabinoids
Client Name	Strangeways	Batch Code	2743992

Results

Cannabinoid	% (w/w)	Content in Sample (mg)
Cannabidiol (CBD)	77.650	101550.67000
Cannabidiolic acid (CBDa)	0,05	65,3900
Cannabidivarin (CBDV)	0,10	130,7800
Cannabigerol (CBG)	< 0,01	Not Detected
Cannabigerolic Acid (CBGa)	0,10	130,7800
Cannabinol (CBN)	< 0,01	Not Detected
Tetrahydrocannabinolic Acid (THCa)	< 0,01	Not Detected
Δ-9-Tetrahydrocannabinol (Δ-9-THC)	< 0,01	Not Detected
Δ-8-Tetrahydrocannabinol (Δ-8-THC)	< 0,01	Not Detected
Cannabichromene (CBC)	< 0,01	Not Detected

Chromatogram



Dilution Calculation

The CBD content of the above product has been calculated based on the calculation displayed below.

$$\text{Final CBD Percentage} = \frac{\text{CBD Component Weight} * \text{CBD Percentage}}{\text{Product Weight}}$$

The amount of CBD (mg) has then been calculated by multiplying the Final CBD Percentage by the product weight (as seen below).

$$\text{Final CBD amount (mg)} = \text{Final CBD Percentage} * \text{Product Weight}$$

In the event that multiple products were made from the same batch then the amount of CBD (mg) has been calculated per product.

$$\text{Final CBD amount (mg)} = (\text{Product Weight}/\text{No. Products Per Batch}) * \text{Final CBD Percentage}$$

CBD Percent Dilution	10.1551	CBD (mg) Dilution	101551.000
----------------------	---------	-------------------	------------

This report and all information herein has been confirmed by the authorised person named below. The report should not be reproduced, except in its entirety, without written consent of the laboratory. Results are applicable only for the samples tested and the specific tests conducted. All tests are carried out under strict laboratory protocols, guidelines and supervision.

Authorised by:

Matthew Birt, Lead Scientist & Product Development Manager